

## Your independent and competent partner

### REFERENCE AND TRADITION

- More than 50 years of experience, founded in 1967 by 12 pension funds
- Pioneer in management of pooled vehicles for Swiss pension funds
- More than 500 investors in Switzerland
- Investors are small, mid and large sized, corporate and public pension plans

### ATTRACTIVE OFFERING

- Comprehensive and broadly diversified range of products for a flexible implementation of a pension funds' investment strategy under BVV2 guidelines
- Independent and transparent manager selection process
- Support for our investors regarding allocation and re-allocation of their assets
- Exercise of voting rights for Swiss Equities

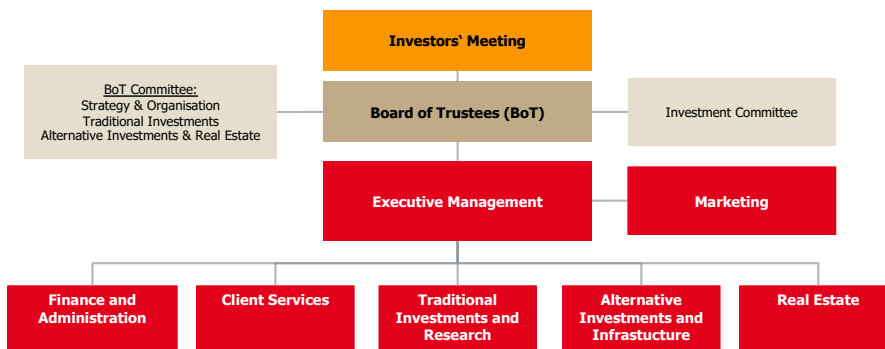
### INDEPENDENT PARTNER

- Long-term strategy dedicated to occupational benefit plan
- No representation or influence of financial institutions in the board of trustees
- Professionals of the IST focus on the needs of Swiss pension plans
- Offices in Zurich and Lausanne

### SUCCESSFUL OPEN ARCHITECTURE

- Building blocks concept with clearly defined product characteristics
- In-depth and focused funds and manager analysis
- Management of the IST investment funds by nearly 20 Swiss and international asset managers
- Balanced funds are managed internally primarily using IST funds
- Multi-level risk control

### ORGANISATIONAL STRUCTURE



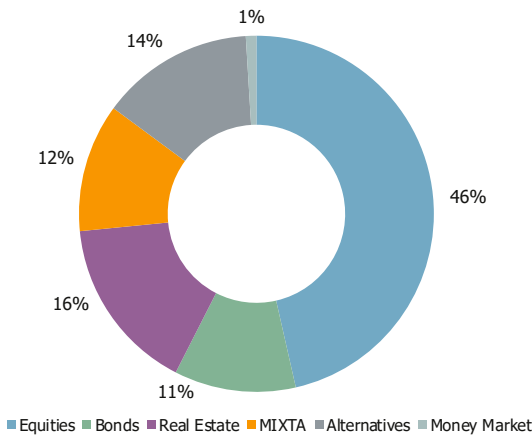
- Custodian Bank: Bank Lombard Odier & Cie AG, Geneva
- Fund Admin. Company: Lombard Odier AM (Switzerland) SA
- Auditors: Ernst & Young AG, Zurich
- Supervisory: Occupational pension supervisory committee

### VERY EXPERIENCED BOARD OF TRUSTEES

- Yvar Mentha, President, Partner BRP Bizzozero & Partners SA, Geneva
- Reto Bachmann, Member, Director of the Pension Fund of the Canton of Solothurn, Solothurn
- Marc Roger Bohren, Member, Vice President of the Board of Trustees of skycare, Chairman of the Board of Directors of Skysoft-ATM, Geneva
- Sergio Campigotto, Member, Deputy Head of the Migros Pension Fund, Schlieren
- Dr. Werner Frey, Member, Independent Expert, Stäfa
- Fritz Hirsbrunner, Member, Independent Board Member, Cully
- Urs Iseli, Member, Pension Fund Head, BKW Pension Fund, Bern
- Stephan Köhler, Member, Senior Portfolio Manager, Pension Fund of F. Hoffmann-La Roche, Basel
- Stefan Kühne, Member, Head of Securities, PKE Energy Pension Foundation, Zurich
- Josef Lütolf, Member, Head of Asset Management, Lucerne Pension Fund, Lucerne
- Prof. Dr. Jacques-André Schneider, Member, Lawyer, Geneva
- Peter Voser, Member, Deputy Head of Capital Investments, Aargau Pension Fund, Aarau
- Beat Wüst, Member, Head of Asset Management, GastroSocial Pension Fund, Aarau

# Your independent and competent partner

## ASSETS UNDER MANAGEMENT: CHF 9.6 MRD. (GROSS)



## TRANSPARENT AND COMPETITIVE INVESTMENTS

- 35 investment funds of the IST, 3 of the IST2 and 5 of the IST3
- Fees at original costs (non-profit organisation)
- Attractive, volume-based fee structure
- Daily liquidity \*
- Daily valuation \* (available at around 12.00), Forward-Pricing
- Publications: Internet, Bloomberg, Reuters, Telekurs etc.
- Minimum administrative efforts for investors

\* except Immo Invest Switzerland, Real Estate CH Residential, Real Estate CH Residential Focus, Real Estate Global, Insurance Linked Strategies, Private Equity, Infrastructure Debt and Global Infrastructure

	Bonds			Equities		Real Estate		Alternative Investments	Balanced
	Money Market	CHF	Foreign Currencies	Switzerland	Foreign	Switzerland	Foreign		
<b>Passive</b>		Swiss Bonds Index		Swiss Equities Index SMI	Globe Index				
				Swiss Equities SPI Plus*	Globe Index Hedged CHF				
					America Index				
					Europe Index				
					Pacific Index				
<b>Active</b>	Money Market CHF	Foreign Bonds CHF		Swiss Equities Small Mid Caps	Global Equities Low Vol	Immo Invest Switzerland	Global REIT	Insurance Linked Strategies USD	Mixta Optima 15
		Governo Bond Hedged CHF	Governo Bond	Swiss Equities Minimum Variance**	Global Small Mid Caps	Immo Optima Switzerland	Real Estate Global USD	Insurance Linked Strategies Hedged CHF	Mixta Optima 25
		Foreign Bonds Hedged CHF	Foreign Bonds		America Small Mid Caps	Real Estate CH Residential	Real Estate Global Hedged CHF	Global Infrastructure***	Mixta Optima 35
		Global Convertibles Hedged CHF	Emerging Markets Bonds		Europe Small Mid Caps	Real Estate CH Residential Focus		Infrastructure Debt USD***	Mixta Optima 30**
					Equities Emerging Markets Low Vol			Infrastructure Debt 2 USD***	Mixta Optima 75
								Private Equity EUR***	
								Private Equity 2 EUR***	

\*one investment fund of the IST and the IST2 respectively \*\* investment fund of the IST2 \*\*\* investment fund of the IST3

### IST Investmentsstiftung

Manessestrasse 87 | 8045 Zürich  
 Tel. 044 455 37 00 | Fax 044 455 37 01  
 info@istfunds.ch | istfunds.ch

### IST Fondation d'investissement

Avenue Ruchonnet 2 | 1003 Lausanne  
 Tél 021 311 90 56 | Fax 044 455 37 01  
 info@istfunds.ch | istfunds.ch