

MSCI ESG Fund Ratings Report

REPORT DATE:
OCTOBER 02, 2023

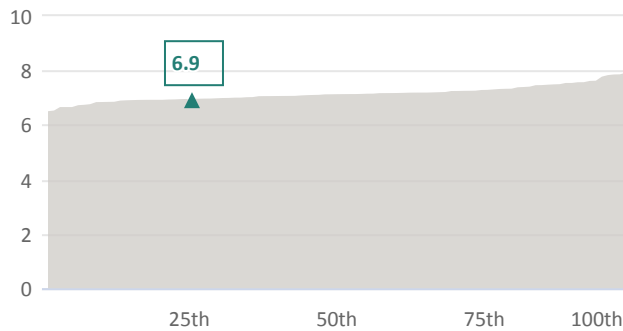
IST Mixta Optima 35 II

PEER
percentile
26th/100

GLOBAL
percentile
70th/100



ESG QUALITY SCORE PERCENTILE VS. PEER GROUP MIXED ASSET CHF CONSERVATIVE (N=98)



ENVIRONMENTAL SCORE
5.8 FUND 6.0 PEER AVG

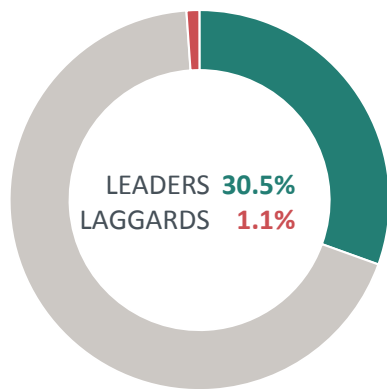
SOCIAL SCORE
5.1 FUND 5.3 PEER AVG

GOVERNANCE SCORE
6.0 FUND 6.1 PEER AVG

The Fund ESG Rating measures the resiliency of portfolios to long term risks and opportunities arising from environmental, social, and governance factors. The **IST Mixta Optima 35 II** receives an MSCI ESG Rating of **A**, based on an ESG Quality Score of 6.9 out of 10. The fund has 8.1% exposure to holdings with a positive ESG rating trend, 2.8% exposure to holdings with negative ESG rating trend and 1.1% exposure to ESG laggards. It ranks in the 26th percentile within the **Mixed Asset CHF Conservative** peer group and in the 70th percentile within the global universe of all funds in coverage.

ESG Policy: n/a
ISIN: CH0029031470
Asset Class: Mixed Assets
Domicile: Switzerland
Peer Group: Mixed Asset CHF Conservative
Holdings Count: 3905
ESG Coverage: 75.0%
Holdings as of: March 31, 2023

EXPOSURE TO ESG LEADERS & LAGGARDS



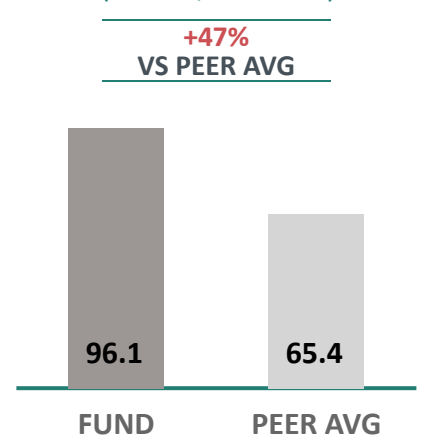
ESG Leaders are companies with an ESG rating of AAA or AA (best in class). ESG Laggards are companies with an ESG Rating of B or CCC (worst in class).

EXPOSURE TO POSITIVE & NEGATIVE TREND



Companies with negative (-) and positive (+) ESG rating trend compared to their previous ESG rating.

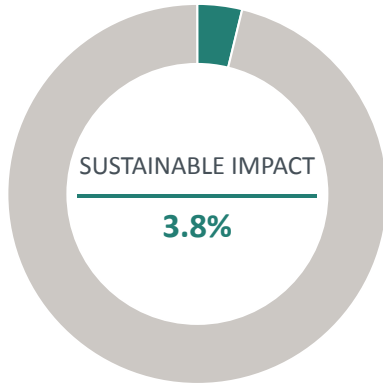
CARBON RISK (t CO2e/\$M Sales)



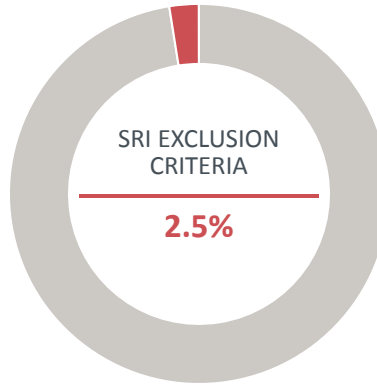
Measures a fund's exposure to carbon intensive companies. The figure is the sum of security weight multiplied by the security Carbon Intensity.

FUND EXPOSURE SUMMARY

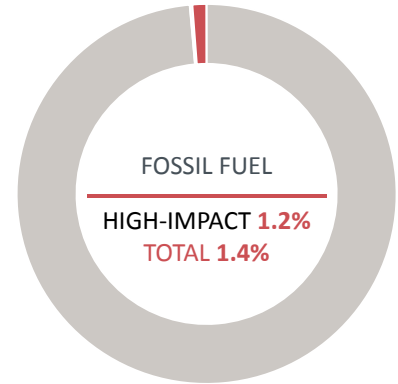
EXPOSURE TO SUSTAINABLE IMPACT THEMES



EXPOSURE TO SRI EXCLUSIONS



EXPOSURE TO FOSSIL FUEL

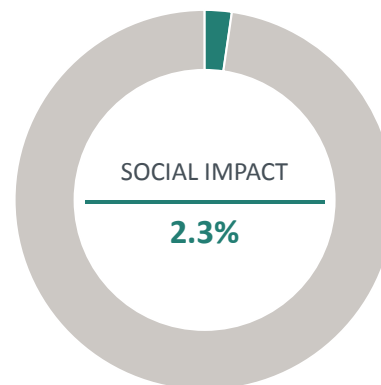
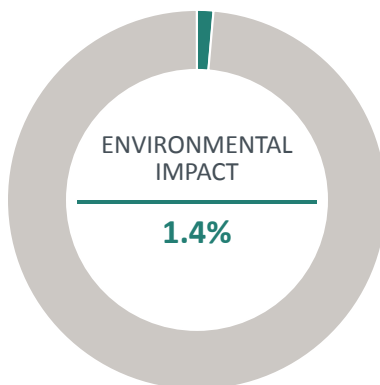
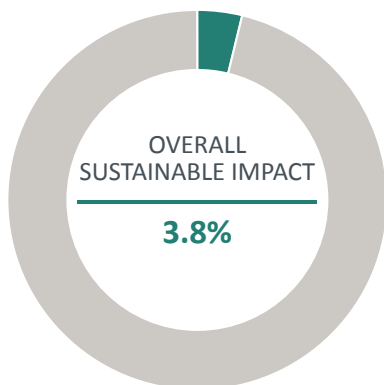


TOP 10 HOLDINGS

Rank	Holding Name	Fund Weight*	Sustainable Impact Revenue (Theme)	Fossil Fuel	SRI Exclusions	Carbon Intensity	ESG Score
1	Swiss Life iFunds (CH) Bd Swiss Fra Frgn (CHF) IA1	5.9%	2.4% (Alternative Energy, Energy Efficiency, Green Building, SME Finance)			31.0	7.2
2	Nestle SA ORD	2.9%	20.2% (Nutrition)			39.2	8.4
3	Novartis AG ORD	2.0%	59.1% (Major Diseases Treatment)			9.4	7.5
4	Roche Holding AG	1.8%	44.0% (Major Diseases Treatment)			9.7	6.1
5	Capital Group Global Corporate Bond (LUX) A11h-CHF	1.7%	3.0% (Alternative Energy, Energy Efficiency, Green Building, Pollution Prevention, Major Diseases Treatment, Nutrition, SME Finance)			180.4	6.6
6	BNY Mellon U.S. Mcpl Infra Debt E USD Acc	0.9%				n/a	n/a
7	Fullerton Short Term Interest Rate B	0.8%	14.2% (Alternative Energy, Energy Efficiency, Green Building, Sustainable Water, Pollution Prevention, SME Finance)			159.9	6.7
8	Zurich Insurance Group AG ORD	0.6%				0.6	9.3
9	Compagnie Financiere Richemont SA ORD	0.6%			Yes	3.2	7.6
10	UBS Group AG ORD	0.4%	0.5% (SME Finance)			3.4	8.5

*Fund holding weights are normalized to reflect exclusion of short positions.

SUSTAINABLE IMPACT EXPOSURE



How to read this page

Revenue exposure to Sustainable Impact Solutions reflects the extent to which company revenue is exposed to products and services that help solve the world's major social and environmental challenges. It is calculated as a weighted average, using portfolio weights and each issuer's percent of revenue generated from Sustainable Impact Solutions. To be eligible to contribute, an issuer must maintain minimum ESG standards.

The classifications below help interpret the different degrees of exposure.

Percentage	Exposure
>20%	Very High
>10% and <=20%	High
>5% and <=10%	Moderate
>1% and <=5%	Low
<=1%	Negligible

See the Terms and Definitions section at the back of the report for more detail.

CLIMATE CHANGE

Alternative Energy (%)	0.2%
Energy Efficiency (%)	0.5%
Green Building (%)	0.5%

NATURAL CAPITAL

Sustainable Water (%)	0.1%
Pollution Prevention (%)	0.0%
Sustainable Agriculture (%)	0.0%

BASIC NEEDS

Major Diseases Treatment (%)	1.5%
Sanitation (%)	0.1%
Nutrition (%)	0.2%
Affordable Real Estate (%)	0.1%

EMPOWERMENT

Education (%)	0.0%
SME Finance (%)	0.1%
Connectivity (%)	0.0%

VALUES ALIGNMENT EXPOSURE



How to read this page

Values Alignment metrics provide transparency to help identify funds that align with ethical, religious or political views. The metrics measure the percentage of portfolio's market value exposed to companies flagged for controversial business involvement, controversies, global norms violations, and religious compliance.

Business Involvement

The percentage of portfolio's market value exposed to companies flagged for involvement in a category according to our screening definitions i.e. Highly Restrictive, Any Tie and others. For our Highly Restrictive screen definition, in most cases, this is defined as companies that derived 5% or more revenue from an involvement category. Refer to the Terms and Definitions at the back of the report.

Religious Values

The percentage of portfolio's market value exposed to companies that have been flagged for non-compliance for Catholic Values or Islamic Values.

International Norms

The percentage of portfolio's market value exposed to companies in violation of global norms and conventions.

See the Terms and Definitions section at the back of the report for more detail.

BUSINESS INVOLVEMENT

Adult Entertainment — Highly Restrictive (%)	0.0%
Alcohol — Highly Restrictive (%)	0.5%
Civilian Firearms — Highly Restrictive (%)	0.6%
Civilian Firearms Retailer (%)	0.0%
Civilian Firearms Producer (%)	0.6%
Gambling — Highly Restrictive (%)	0.2%
Nuclear Power — Highly Restrictive (%)	0.7%
Tobacco — Highly Restrictive (%)	0.1%
Weapons - Any Tie (%)	0.9%
Controversial Weapons (%)	0.0%
Direct Predatory Lending (%)	0.2%
Genetic Engineering (%)	0.1%

RELIGIOUS VALUES

Catholic Values Non-Compliant (%)	7.4%
Islamic Non-Compliant (%)	26.4%

INTERNATIONAL NORMS

Global Compact Compliance Violation (%)	0.1%
Global Compact Compliance Violation or Watch List (%)	5.8%
Human Rights Norms Violation (%)	0.1%
Human Rights Norms Violation or Watch List (%)	3.2%
Labor Norms (%)	0.0%
Labor Norms Violation or Watch List (%)	2.5%

RISK EXPOSURE

ESG QUALITY SCORE CARD

	FUND	PEER AVG	VS PEER AVG
ESG QUALITY SCORE (0-10)	6.9	7.1	-0.2
ENVIRONMENTAL SCORE (0-10)	5.8	6.0	-0.2
SOCIAL SCORE (0-10)	5.1	5.3	-0.2
GOVERNANCE SCORE (0-10)	6.0	6.1	-0.1
ESG LEADERS (%)	30.5%	43.3%	-12.8%
ESG LAGGARDS (%)	1.1%	0.8%	0.3%
ESG - POSITIVE TREND (%)	8.1%	8.4%	-0.3%
ESG - NEGATIVE TREND (%)	2.8%	4.2%	-1.4%

How to read this page

Environmental Risk

Carbon Risk is the weighted average carbon intensity (tCO2e / \$M sales) and measures a fund's exposure to carbon intensive companies.

High impact fossil fuel reserves measure portfolio's market value exposed to companies that own high impact fossil fuel reserves including Thermal Coal, Oil Sands, and Shale Oil and Shale Gas. Water risk measure the portfolio's market value exposed to companies with operations in lines of business that are typically highly water intensive.

Reputational Risk

The percentage of portfolio's market value exposed to companies facing one or more Very Severe controversies.

Governance Metrics

Governance metrics measure the percentage of a portfolio's market value exposed to companies with different corporate governance practices related to Board, Pay, Ownership & Control and Accounting.

See the Terms and Definitions section at the back of the report for more detail.

ENVIRONMENTAL RISK

FOSSIL FUEL

Carbon Risk (t CO2e/\$M sales)	96.1
Own Fossil Fuel Reserves (%)	1.4%
High Impact Fossil Fuel Reserves (%)	1.2%
Exposure to High Water Risk (%)	5.4%

REPUTATIONAL RISK

Overall Reputational Risk (%)	0.0%
Environmental (%)	0.0%
Customer (%)	0.0%
Human Rights (%)	0.0%
Labor (%)	0.0%
Governance (%)	0.0%

GOVERNANCE RISK

BOARD

Board Flag (%)	9.0%
Lack of Independent Board (%)	n/a
Board independence (0-25%)	0.2%
Board independence (25-50%)	3.1%
Board independence (50-75%)	11.4%
Board independence (75-100%)	32.3%
No Female Directors (%)	2.7%
3+ Female Directors (%)	36.0%
Female Rep. 30% of Directors (%)	33.9%
Entrenched Board (%)	6.1%
Overboarding (%)	14.3%
Negative Director Votes (%)	22.1%

GOVERNANCE RISK (CONTINUED)

ACCOUNTING

Accounting Flag (%)	4.4%
---------------------	------

PAY

Pay Flag (%)	1.6%
Votes Against Pay Practices (%)	19.8%
No Pay Performance Link (%)	1.5%
Lack of Internal Pay Equity (%)	6.9%
Executive Pay Non-Disclosure (%)	7.7%

OWNERSHIP & CONTROL

Ownership & Control Flag (%)	7.9%
One Share One Vote (%)	18.5%
No Annual Director Elections (%)	9.5%
Does not use Majority Voting (%)	9.5%
Controlling Shareholder (%)	12.2%
Controlling Shareholder Concerns (%)	7.2%
Cross Shareholdings (%)	0.8%
Poison Pill (%)	0.3%

TERMS AND DEFINITIONS

Methodology

We leverage our ESG ratings and research coverage of over 10,500 companies (19,500 total issuers including subsidiaries) and more than 760,000 equity and fixed income securities to create ESG Ratings, scores and metrics for approximately 65,000 multi-asset class Mutual Funds and ETFs globally. MSCI ESG Fund Ratings aims to provide fund-level transparency to help clients better understand and measure the ESG characteristics of the total portfolio, and rank or screen funds based on a diverse set of ESG exposure categories.

To learn more about MSCI ESG Research products, please visit: www.msci.com/esg-ratings

MSCI ESG FUND RATINGS INCLUSION CRITERIA

Certain MSCI ESG Fund Ratings holdings data is sourced from Lipper (see [Notice and Disclaimer](#)). To be included in Fund Ratings, a fund must pass the following three criteria:

1. **65% of the fund’s gross weight must come from covered securities.**
 - a. The coverage universe for issuers consists of MSCI ESG Ratings (over 10,500 companies and more than 760,000 equity and fixed income securities globally).
 - b. Cash positions and other asset types not relevant for ESG analysis are removed prior to calculating a fund’s gross weight.
 - c. The absolute values of short positions are included in a fund’s gross weight calculation, but are treated as uncovered for ESG data.
 - d. Security asset type must have recourse to the rated issuer.
2. **Fund holdings date must be less than one year old.**
3. **Fund must have at least ten securities.**

FACTOR CALCULATIONS

While Fund Ratings includes over 600 metrics, the calculation for each one is done according to one of three basic methodologies. The ESG Fund Ratings Methodology document notes which approach is used for each metric.

The first step in all cases (except for “Fund ESG Coverage (%)”, which is described separately in the Fund Coverage section) is to exclude any short positions. Weights of the remaining positions are normalized to 100%. Following that, the metrics will utilize one of the three methodologies described here:

Method 1: Weighted Average: This is the sumproduct of security weights and security values for a given metric. Securities without values for the metric being measured are excluded, and the weights of the remaining securities are normalized to 100%.

	Weight	ESG Score	Weight x Score
Security A	50%	4	2.0
Security B	30%	8	2.4
Security C	20%	7	1.4
TOTAL	100%		5.8

Method 2: Metric Weighted Average: This calculation is a slight variation on the Weighted Average calculation described above in Method 1. The distinction is that the Metric Weighted Average includes two different sets of weights; the security weights and the metric weights from the ESG Ratings model. As an example, an Environment Score may represent only 10% of the ESG exposure for one company, but 50% of the ESG exposure for another company. These metricweights are included in the calculation so that the Fund score will accurately represent the exposure from each security.

	Fund Weight	Environment Score	Environment Weight	Fund Weight x Environment Weight	Normalized Weight	Normalized Weight x Environment Score
Security A	50%	2	35%	18%	76%	1.5
Security B	30%	8	5%	2%	7%	0.5
Security C	20%	7	20%	4%	17%	1.2
TOTAL	100%					3.3

Method 3: Percentage Sum: Metrics calculated using Percentage Sum show the percent of the fund that meets the criteria for the metric being measured. The percentage represents a minimum

value, as there may be uncovered securities that are also True. For instance, a “Predatory Lending (%)” of 10% means that 10% of the weight of the fund comes from issuers with identified ties to predatory lending. The actual percentage may be higher if the fund holds companies involved in predatory lending that are outside of the product’s coverage universe.

The security weights used in Percentage Sum calculations are set by excluding short positions, and normalizing the remaining positions to 100%. Note that cash positions are kept in the fund to avoid overstating exposure to the metric. Cash is treated as a portion of the fund that does not meet the criteria to the metric being measured.

	Fund Weight	Predatory Lending	Predatory Lending %
Security A	40%	No	-
Security B	30%	No	-
Security C	20%	Yes	20%
Security D	10%	Uncovered	-
			20%

FUND ESG QUALITY SCORE

The “Fund ESG Quality Score” assesses the resilience of a fund’s aggregate holdings to long term ESG risks. Highly rated funds consist of issuers with leading or improving management of key ESG risks, based on a granular breakdown of a company’s business: its core product or business segments, the locations of its assets or revenues, and other relevant measures such as outsourced production. The “Fund ESG Quality Score” is provided on a 0-10 score, with 0 and 10 being the respective lowest and highest possible fund scores.

The “Fund ESG Quality Score” is assessed using the underlying holding’s “Overall ESG Scores”, “Overall ESG Ratings”, and “Overall ESG Rating Trends”. It is calculated in a series of 3 steps.

Step 1: Calculate the “Fund Weighted Average ESG Score” of the underlying holding’s “Overall ESG Scores”. Methodology for the issuer level scores are available in a separate “MSCI ESG Ratings Methodology” document. The table below demonstrates how the “Fund Weighted Average ESG Score” is calculated. Note that in this example, Security E does not have an ESG Score. Security E is therefore “dropped” from analysis, and the weights of the remaining securities are normalized to 100%. The normalized weights and ESG scores are then used to calculate the “Fund Weighted Average ESG Score” of 6.6.

Step 1 Example

	Weight	ESG Score	Normalized Weight	Normalized Weight x Score
Security A	20%	4.0	25%	1.0
Security B	40%	8.0	50%	4.0
Security C	8%	7.0	10%	0.7
Security D	12%	6.0	15%	0.9
Security E	20%	N/A	0%	N/A
TOTAL	100%		100%	6.6

ESG FUND RATING

The top level fund signal, the “Fund ESG Rating”, assesses the resilience of a fund’s aggregate holdings to long term ESG risks. Highly rated funds consist of issuers with leading or improving management of key ESG risks.

ESG RATINGS WHAT IT MEANS

AAA, AA	LEADER	The companies that the fund invests in show strong and/or improving management of financially relevant environmental, social and governance issues. These companies may be more resilient to disruptions arising from ESG events.
A, BBB, BB	AVERAGE	The fund invests in companies that show average management of ESG issues, or in a mix of companies with both above-average and below-average ESG risk management.
B, CCC	LAGGARD	The fund is exposed to companies that do not demonstrate adequate management of the ESG risks that they face, or show worsening management of these issues. These companies may be more vulnerable to disruptions arising from ESG events.

The Fund ESG Rating is calculated as a direct mapping of “Fund ESG Quality Score” to letter rating categories.

Fund ESG Quality Score	Fund ESG Rating
8.6* - 10	AAA
7.1 - 8.6	AA
5.7 - 7.1	A
4.3 - 5.7	BBB
2.9 - 4.3	BB
1.4 - 2.9	B
0.0 - 1.4	CCC

*Appearance of overlap in the score ranges is due to rounding. The 0 to 10 scale is divided into 7 equal parts, each corresponding to a letter rating.

PEER GROUP PERCENTILES

Each fund's overall ESG Quality Score is also shown as a percentile in its peer group. The Fund ESG Quality Score – Peer Percentile represents the percentage of funds in a fund's peer group with an ESG Score equal to, or lower than, the fund's ESG Score.



The peer groups are defined using the Lipper Global Classification Scheme. The following criteria must be met for a fund to receive a Fund ESG Quality Score – Peer Percentile:

1. The fund must be categorized by the Lipper Global Classification scheme
2. The peer group must contain at least 30 funds.
3. The standard deviation of the Fund ESG Quality Score within the peer group must be greater than, or equal to, 0.1.

The Lipper Global Classification Scheme is detailed in ESG Fund Ratings Methodology document.

GLOBAL PERCENTILES

Every fund included in Fund Ratings receives a Fund ESG Quality Score – Global Percentile. The Global Percentile notes the

percentage of funds, covered by Fund Ratings, with a score lower than, or equal to, a fund's ESG Quality Score. Considered in conjunction, the Global and Peer Percentiles position a fund from both an absolute (product-wide) and relative (peer category) perspective.

TREATMENT OF CASH

Cash holdings are removed prior to calculating Fund ESG Coverage (%). Cash is removed because it is outside the scope of ESG relevancy. Including it in the coverage figure would lead to the undesired result of funds failing to meet the coverage threshold due to cash allocations.

The weight of cash is included in all metrics that measure exposure to specific criteria (e.g. Tobacco, Fossil Fuel Reserves, ESG Laggards, etc.). Excluding cash from exposure metrics would generate overstated results.

TREATMENT OF SHORT POSITIONS

When calculating "Fund ESG Coverage (%)", short positions are always treated as uncovered, even if held as a security of an issuer within ESG coverage. By including the absolute value of short positions in the uncovered portion of a fund, the coverage % will not overstate ESG coverage.

Although short positions are included in the gross value when calculating coverage, they are removed prior to calculating the rest of the MSCI ESG Fund Ratings results. This is because the interpretation of short positions, from an ESG perspective, varies widely based on use case and the specific metric being considered.

Sustainable Impact Metrics

Sustainable Impact measures revenue exposure to Sustainable Impact Solutions which reflects the extent to which company revenue is exposed to products and services that help solve the world's major social and environmental challenges. It is calculated as a weighted average, using portfolio weights and each issuer's percent of revenue generated from Sustainable Impact Solutions. Additionally, Sustainable Impact Solutions revenue from companies with negative externalities is excluded.

Negative externalities refer to very severe and severe ESG controversies, ESG Ratings of CCC and B, direct involvement in predatory lending, involvement in controversial weapons, more than 5% revenue from conventional weapons or firearms, and more than 10% revenue from alcohol or tobacco production.

OVERALL

Revenue Exposure to Sustainable Impact Companies (%): A portfolio's exposure to Sustainable Impact Solutions is the portfolio weighted average of each company's percent of revenue generated by Environmental Impact and Social Impact Solutions goods and services. Additionally, Sustainable Impact Solutions revenue from companies with negative externalities is excluded.

ENVIRONMENTAL

Environmental Impact Companies (%): A portfolio's exposure to Environmental Impact is the portfolio weighted average of each company's percent of revenue generated by Environmental Impact goods and services. Additionally, Environmental Impact revenue from companies with negative externalities is excluded.

The following environmental metrics represent a portfolio's exposure to each theme which is calculated as the portfolio weighted average of each company's percent of revenue generated from goods and services. Additionally, revenue from companies with negative externalities is excluded.

CLIMATE CHANGE

- Energy Efficiency (%)
- Alternative Energy (%)
- Green Building (%)

NATURAL CAPITAL

- Pollution Prevention
- Sustainable Waters

SOCIAL

Social Impact Companies (%): A portfolio's exposure to Social Impact is the portfolio weighted average of each company's percent of revenue generated by Social Impact goods and services. Additionally, Social Impact revenue from companies with negative externalities is excluded.

The following social metrics represent a portfolio's exposure to each theme which is calculated as the portfolio weighted average of each company's percent of revenue generated from goods and services. Additionally, revenue from companies with negative externalities is excluded.

BASIC NEEDS

- Affordable Real Estate (%)
- Major Disease Treatment (%)
- Nutrition (%)
- Sanitation Products (%)

EMPOWERMENT

- Education (%)
- Social Finance (%)

Values Alignment metrics provide transparency to help identify funds that align with ethical, religious or political views. The metrics measure the percentage of portfolio's market value exposed to companies flagged for controversial business involvement, controversies, global norms violations, and religious compliance.

BUSINESS INVOLVEMENT

SRI Exclusion Criteria (%): The percentage of portfolio's market value exposed to companies flagged for one or more standard SRI exclusion factors (alcohol, civilian firearms, gambling, weapons, cluster bombs, landmines, nuclear power, GMOs, and tobacco).

Adult Entertainment - Highly Restrictive (%): The percentage of portfolio's market value exposed to companies flagged for involvement in adult entertainment according to our Highly Restrictive screen definition. This includes all adult entertainment producers as well as adult entertainment distributors and retailers if the total revenue is => 5%. The full weight of each flagged company is included in the calculation.

Alcohol - Highly Restrictive (%): The percentage of portfolio's market value exposed to companies flagged for involvement in alcohol according to our Highly Restrictive screen definition. This includes all alcohol producers as well as alcohol distributors, suppliers, and retailers if the combined revenue is => 5%. The full weight of each flagged company is included in the calculation.

Gambling Involvement - Highly Restrictive (%): The percentage of portfolio's market value exposed to companies flagged for involvement in gambling according to our Highly Restrictive screen definition. This includes all gambling facility operators as well as support products & services if the revenue is => 5%. The full weight of each flagged company is included in the calculation.

Nuclear Power Involvement - Highly Restrictive (%): The percentage of portfolio's market value exposed to companies flagged for involvement in nuclear power according to our Highly Restrictive screen definition. This includes all utilities with nuclear power generation operations and suppliers to the nuclear power industry if the revenue is => 5%. The full weight of each flagged company is included in the calculation.

Tobacco Involvement - Highly Restrictive (%): The percentage of portfolio's market value exposed to companies flagged for involvement in tobacco according to our Highly Restrictive screen definition. This includes all tobacco producers as well as tobacco distributors, suppliers, and retailers if the combined revenue is => 5%. The full weight of each flagged company is included in the calculation.

Weapons Involvement (%): The percentage of portfolio's market value exposed to companies with ties to the manufacture of conventional (including depleted uranium), biological/chemical, or

Values Alignment Metrics

nuclear weapons systems and components. This includes companies that provide support systems and services, as well as those with indirect ties to weapons production through ownership. Note: Involvement in the production of landmines and/or cluster bombs is not captured here, but tracked separately.

Controversial Weapons Involvement (%): The percentage of portfolio's market value exposed to companies with ties to landmines, cluster munitions, biological, chemical, or depleted uranium.

Civilian Firearms - Highly Restrictive (%): The percentage of portfolio's market value exposed to companies flagged for involvement in civilian firearms according to our Highly Restrictive screen definition. This includes all civilian firearms producers as well as civilian firearms retailers if the revenue is => 5%. The full weight of each flagged company is included in the calculation.

Civilian Firearms Retailer (%): The percentage of portfolio's market value exposed to companies that derive any amount of annual revenues from the distribution (wholesale or retail) of firearms or small arms ammunition intended for civilian use.

Civilian Firearms Producer (%): The percentage of portfolio's market value exposed to companies that manufacture firearms and small arms ammunitions for civilian markets. The research does not cover companies that cater to the military, government, and law enforcement markets.

Direct Predatory Lending Involvement (%): The percentage of portfolio's market value exposed to companies that provide products and services associated with certain controversial lending practices.

Genetic Engineering Involvement (%): The percentage of portfolio's market value exposed to companies with ties to production of genetically modified organisms.

RELIGIOUS VALUES

Catholic Values Fail (%): The percentage of portfolio's market value exposed to companies that have been flagged for one or more of the underlying USCCB exclusionary factors: abortion, contraceptives, stem cells, discrimination, adult entertainment, defense and weapons, landmines, or predatory lending.

Islamic Non-Compliant (%): The percentage of portfolio's market value exposed to companies that are non-compliant according to Sharia investment principles. Non-compliant companies are those with ownership of a prohibited business activity or Hotel tie or have total revenues greater than or equal to 5% from prohibited business activities or with financial ratios greater than or equal to 33.33%. Prohibited Business Activities include Adult Entertainment, Alcohol, Cinemas, Conventional Financial Services, Gambling, Music, Pork, Tobacco, and Weapons.

INTERNATIONAL NORMS

Global Compact Compliance Violation (%): The percentage of portfolio's market value exposed to companies in violation of the UN Global Compact principles.

Global Compact Compliance Violation or Watch List (%): The percentage of portfolio's market value exposed to companies in violation of the UN Global Compact principles, or on MSCI's "Watch List" for potential violations.

Human Rights Norms Violation (%): The percentage of portfolio's market value exposed to companies in violation of international norms around human rights.

Human Rights Norms Violation or Watch List (%): The percentage of portfolio's market value exposed to companies in violation of international norms around human rights, or on MSCI's "Watch List" for potential violations.

Labor Norms Violation (%): The percentage of portfolio's market value exposed to companies in violation of the International Labour Organization's broader set of labor standards.

Labor Norms Violation or Watch List (%): The percentage of portfolio's market value exposed to companies in violation of the International Labour Organization's broader set of labor standards, or on MSCI's "Watch List" for potential violations.

Risk Exposure Metrics

Risk Exposure metrics provide transparency on select environmental and governance risks. They provide insight into potentially unknown exposures and unintended bets the may pose risk to investors.

ENVIRONMENTAL RISK

Carbon Risk: The Weighted Average Carbon Intensity measures a fund's exposure to carbon intensive companies. The figure is the sum of security weight (normalized for corporate positions only) multiplied by the security Carbon Intensity.

Own Fossil Fuel Reserves (%): The percentage of portfolio's market value exposed to companies that own fossil fuel reserves.

High Impact Fossil Fuel Reserves (%): The percentage of portfolio's market value exposed to companies that own high impact fossil fuel reserves. High impact fossil fuel reserves include Thermal Coal, Oil Sands, and Shale Oil and Shale Gas.

Exposure to High Water Risk (%): The percentage of portfolio's market value exposed to companies with a Water Stress Exposure Score > 6.6. Scores combine the geographic and business segment components and range from 0 to 10.

REPUTATIONAL RISK (VERY SEVERE CONTROVERSIES)

Overall Reputational Risk (%): The percentage of portfolio's market value exposed to companies facing one or more Very Severe controversies related to the environment, customers, human rights, labor rights and governance.

Environmental Controversies (%): The percentage of portfolio's market value exposed to companies facing one or more Very Severe Environmental controversies related to Energy & Climate Change, Land Use & Biodiversity, Toxic Spills & Releases, Water Stress, or Operational Waste.

Customer Controversies (%): The percentage of portfolio's market value exposed to companies facing one or more Very Severe customer-related controversies related to Anticompetitive Practices, Customer Relations, Market & Advertising, Privacy & Data Security, or Product Safety.

Human Rights Controversies (%): The percentage of portfolio's market value exposed to companies facing one or more Very Severe Human Rights and Community controversies related to Impact on Local Communities, Civil Liberties, or Human Rights.

Labor Controversies (%): The percentage of portfolio's market value exposed to companies facing one or more Very Severe Labor controversies related to Child Labor, Collective Bargaining, Discrimination, Health & Safety, Labor Management, or Supply Chain Labor Standards.

Governance Controversies (%): The percentage of portfolio's market value exposed to companies facing one or more Severe or Very Severe Governance controversies related bribery, fraud, controversial investments, and governance structure.

GOVERNANCE RISK

Board Flag (%): The percentage of portfolio's market value exposed to companies ranking "below average" relative to global peers on MSCI's assessment of board structure and effectiveness.

Lack of Independent Board Majority (%): The percentage of portfolio's market value exposed to companies lacking an independent board majority.

The following Board metrics represent the percentage of portfolio's market value exposed to companies with their respective board independence:

- Board Independence (0-25%)
- Board Independence (25-50%)
- Board Independence (50-75%)
- Board Independence (75-100%)

No Female Directors (%): The percentage of portfolio's market value exposed to companies with no female directors.

Three or More Female Directors (%): The percentage of portfolio's market value exposed to companies with three or more female directors.

Female Represent 30% of Directors (%): The percentage of portfolio's market value exposed to companies where women comprise at least 30% of the board of directors.

Entrenched Board (%): The percentage of portfolio's market value exposed to companies with long-tenured or aging directors that suggest a problem with board entrenchment.

Overboarding (%): The percentage of portfolio's market value exposed to companies with executive board members that serve on the boards of two or more additional public companies.

Negative Director Votes (%): The percentage of portfolio's market value exposed to companies facing significant negative director votes.

Ownership and Control Flag (%): The percentage of portfolio's market value exposed to companies ranking "below average" relative to global peers on MSCI's assessment of ownership structure and risks.

One Share One Vote (%): The percentage of portfolio's market value exposed to companies flagged for limitations on voting rights including: multiple equity classes with different voting rights or voting rights limited by shares held, residency, duration, or minimum holding period.

No Annual Director Elections (%): The percentage of portfolio's market value exposed to companies where not all directors stand for annual re-election.

Does not use Majority Voting (%): The percentage of portfolio's market value exposed to companies that have not adopted majority voting in the election of directors.

Controlling Shareholder (%): The percentage of portfolio's market value exposed to companies with a controlling shareholder.

Controlling Shareholder Concerns (%): The percentage of portfolio's market value exposed to companies with ownership structure indicating special concerns for minority shareholders.

Cross Shareholdings (%): The percentage of portfolio's market value exposed to companies involved in a series of cross-shareholdings with other companies.

Poison Pill (%): The percentage of portfolio's market value exposed to companies that have adopted shareholder rights plans.

Pay Flag (%): The percentage of portfolio's market value exposed to companies ranking "below average" relative to global peers on MSCI's assessment of executive pay practices.

Significant Votes Against Pay Practices (%): The percentage of portfolio's market value exposed to companies facing significant shareholder votes against pay practices.

No Pay Performance Link (%): The percentage of portfolio's market value exposed to companies flagged for executive pay / performance gaps.

Lack of Internal Pay Equity (%): The percentage of portfolio's market value exposed to companies facing a lack of internal pay equity.

Executive Pay Non-Disclosure (%): The percentage of portfolio's market value exposed to companies flagged for executive pay non-disclosure.

Accounting Flag (%): The percentage of portfolio's market value exposed to companies ranking "below average" relative to global peers on MSCI's assessment of accounting aggressiveness.

Other Metrics

ESG Policy: The Fund ESG Policy factor flag (YES) funds that have adopted investment policies that consider some ESG criteria, including; environmental, social or governance concerns, religious beliefs, inclusive employee policies, or environmentally friendly investments. The flag is attributed to a fund based on what is stated in the fund's investment strategy on the fund prospectus

NOTICE AND DISCLAIMER

- This document and all of the information contained in it, including without limitation all text, data, graphs, charts (collectively, the “Information”) is the property of MSCI Inc. or its subsidiaries (collectively, “MSCI”), or MSCI’s licensors, direct or indirect suppliers or any third party involved in making or compiling any Information (collectively, with MSCI, the “Information Providers”) and is provided for informational purposes only. The Information may not be modified, reverse-engineered, reproduced or redisseminated in whole or in part without prior written permission from MSCI. All rights in the Information are reserved by MSCI and/or its Information Providers.
- The Information may not be used to create derivative works or to verify or correct other data or information. For example (but without limitation), the Information may not be used to create indexes, databases, risk models, analytics, software, or in connection with the issuing, offering, sponsoring, managing or marketing of any securities, portfolios, financial products or other investment vehicles utilizing or based on, linked to, tracking or otherwise derived from the Information or any other MSCI data, information, products or services.
- The user of the Information assumes the entire risk of any use it may make or permit to be made of the Information. NONE OF THE INFORMATION PROVIDERS MAKES ANY EXPRESS OR IMPLIED WARRANTIES OR REPRESENTATIONS WITH RESPECT TO THE INFORMATION (OR THE RESULTS TO BE OBTAINED BY THE USE THEREOF), AND TO THE MAXIMUM EXTENT PERMITTED BY APPLICABLE LAW, EACH INFORMATION PROVIDER EXPRESSLY DISCLAIMS ALL IMPLIED WARRANTIES (INCLUDING, WITHOUT LIMITATION, ANY IMPLIED WARRANTIES OF ORIGINALITY, ACCURACY, TIMELINESS, NON-INFRINGEMENT, COMPLETENESS, MERCHANTABILITY AND FITNESS FOR A PARTICULAR PURPOSE) WITH RESPECT TO ANY OF THE INFORMATION.
- Without limiting any of the foregoing and to the maximum extent permitted by applicable law, in no event shall any Information Provider have any liability regarding any of the Information for any direct, indirect, special, punitive, consequential (including lost profits) or any other damages even if notified of the possibility of such damages. The foregoing shall not exclude or limit any liability that may not by applicable law be excluded or limited, including without limitation (as applicable), any liability for death or personal injury to the extent that such injury results from the negligence or willful default of itself, its servants, agents or sub-contractors.
- Information containing any historical information, data or analysis should not be taken as an indication or guarantee of any future performance, analysis, forecast or prediction. Past performance does not guarantee future results.
- The Information should not be relied on and is not a substitute for the skill, judgment and experience of the user, its management, employees, advisors and/or clients when making investment and other business decisions. All Information is impersonal and not tailored to the needs of any person, entity or group of persons.
- None of the Information constitutes an offer to sell (or a solicitation of an offer to buy), any security, financial product or other investment vehicle or any trading strategy.
- It is not possible to invest directly in an index. Exposure to an asset class or trading strategy or other category represented by an index is only available through third party investable instruments (if any) based on that index. MSCI does not issue, sponsor, endorse, market, offer, review or otherwise express any opinion regarding any fund, ETF, derivative or other security, investment, financial product or trading strategy that is based on, linked to or seeks to provide an investment return related to the performance of any MSCI index (collectively, “Index Linked Investments”). MSCI makes no assurance that any Index Linked Investments will accurately track index performance or provide positive investment returns. MSCI Inc. is not an investment adviser or fiduciary and MSCI makes no representation regarding the advisability of investing in any Index Linked Investments.
- Index returns do not represent the results of actual trading of investable assets/securities. MSCI maintains and calculates indexes, but does not manage actual assets. The calculation of indexes and index returns may deviate from the stated methodology. Index returns do not reflect payment of any sales charges or fees an investor may pay to purchase the securities underlying the index or Index Linked Investments. The imposition of these fees and charges would cause the performance of an Index Linked Investment to be different than the MSCI index performance.
- The Information may contain back tested data. Back-tested performance is not actual performance, but is hypothetical. There are frequently material differences between back tested performance results and actual results subsequently achieved by any investment strategy.
- Constituents of MSCI equity indexes are listed companies, which are included in or excluded from the indexes according to the application of the relevant index methodologies. Accordingly, constituents in MSCI equity indexes may include MSCI Inc., clients of MSCI or suppliers to MSCI. Inclusion of a security within an MSCI index is not a recommendation by MSCI to buy, sell, or hold such security, nor is it considered to be investment advice.
- Data and information produced by various affiliates of MSCI Inc., including MSCI ESG Research LLC and Barra LLC, may be used in calculating certain MSCI indexes. More information can be found in the relevant index methodologies on www.msci.com.
- MSCI receives compensation in connection with licensing its indexes to third parties. MSCI Inc.’s revenue includes fees based on assets in Index Linked Investments. Information can be found in MSCI Inc.’s company filings on the Investor Relations section of msci.com.

- MSCI ESG Research LLC is a Registered Investment Adviser under the Investment Advisers Act of 1940 and a subsidiary of MSCI Inc. Neither MSCI nor any of its products or services recommends, endorses, approves or otherwise expresses any opinion regarding any issuer, securities, financial products or instruments or trading strategies and MSCI's products or services are not a recommendation to make (or refrain from making) any kind of investment decision and may not be relied on as such, provided that applicable products or services from MSCI ESG Research may constitute investment advice. MSCI ESG Research materials, including materials utilized in any MSCI ESG Indexes or other products, have not been submitted to, nor received approval from, the United States Securities and Exchange Commission or any other regulatory body. MSCI ESG and climate ratings, research and data are produced by MSCI ESG Research LLC, a subsidiary of MSCI Inc. MSCI ESG Indexes, Analytics and Real Estate are products of MSCI Inc. that utilize information from MSCI ESG Research LLC. MSCI Indexes are administered by MSCI Limited (UK).
- Please note that the issuers mentioned in MSCI ESG Research materials sometimes have commercial relationships with MSCI ESG Research and/or MSCI Inc. (collectively, "MSCI") and that these relationships create potential conflicts of interest. In some cases, the issuers or their affiliates purchase research or other products or services from one or more MSCI affiliates. In other cases, MSCI ESG Research rates financial products such as mutual funds or ETFs that are managed by MSCI's clients or their affiliates, or are based on MSCI Inc. Indexes. In addition, constituents in MSCI Inc. equity indexes include companies that subscribe to MSCI products or services. In some cases, MSCI clients pay fees based in whole or part on the assets they manage. MSCI ESG Research has taken a number of steps to mitigate potential conflicts of interest and safeguard the integrity and independence of its research and ratings. More information about these conflict mitigation measures is available in our Form ADV, available at <https://adviserinfo.sec.gov/firm/summary/169222>
- Any use of or access to products, services or information of MSCI requires a license from MSCI. MSCI, Barra, RiskMetrics, IPD and other MSCI brands and product names are the trademarks, service marks, or registered trademarks of MSCI or its subsidiaries in the United States and other jurisdictions. The Global Industry Classification Standard (GICS) was developed by and is the exclusive property of MSCI and S&P Global Market Intelligence. "Global Industry Classification Standard (GICS)" is a service mark of MSCI and S&P Global Market Intelligence.
- MIFID2/MIFIR notice: MSCI ESG Research LLC does not distribute or act as an intermediary for financial instruments or structured deposits, nor does it deal on its own account, provide execution services for others or manage client accounts. No MSCI ESG Research product or service supports, promotes or is intended to support or promote any such activity. MSCI ESG Research is an independent provider of ESG data.
- Privacy notice: For information about how MSCI collects and uses personal data, please refer to our Privacy Notice at <https://www.msci.com/privacy-pledge>.